



NEW
MODEL

DIESEL
ENGINE

CFAIR

ENGINE DRIVE COMPRESSOR

ENGINE DRIVE COMPRESSOR

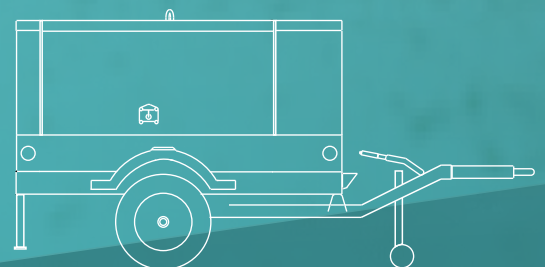
50-1600 CFM
@ 7-30 Bar



4.5 NOW

years design experience

READY TO GO



Screw Type Air Compressor

CF DP 185 MC - 7

① ② ③ ④ ⑤ ⑥

- ① CAIFU Air Compressor
- ② Pressure Types: S: Single Pressure DP: 2 stage pressure
- ③ Free Air Delivery (CFM) 1m3/min=35CFM
- ④ Compressor Types: B: box M: portable L: leak-Guard
- ⑤ Special Spec: C: After-Cooler D: Dry-Air
- ⑤ Working Pressure(Bar) 1bar=0.1 Mpa = 14.5 psi



LOW NOISE LEVEL



LOW FUEL COST



POWERFUL ENGINE



LONG TIME OPERATE



EASY MAINTENANCE

KEY FEATURES



Box Type



Portable Type

APPLICATIONS



Drilling



Roadworks



Mining Site



Construction Site



Sand Blasting

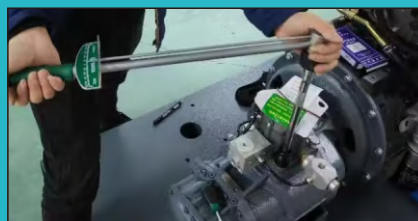


Shipyard

PRODUCTION CONTROL



Air end Machine



Quality assurance



Assembly Line

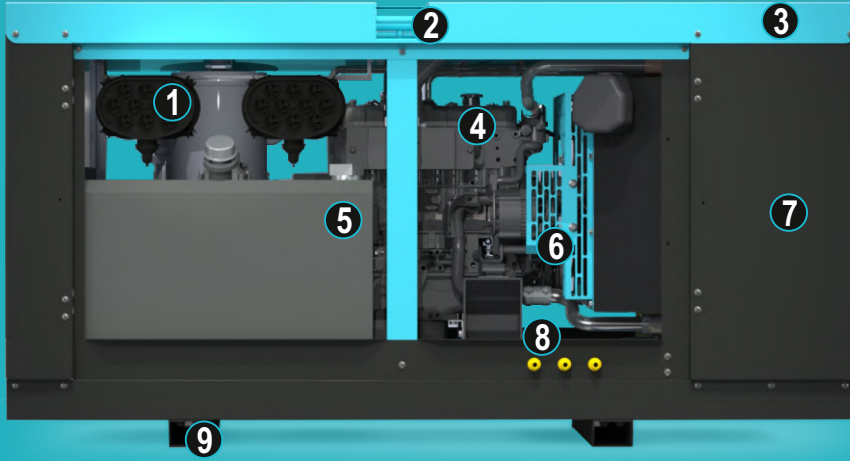
CFAIR

ENGINE DRIVE COMPRESSOR

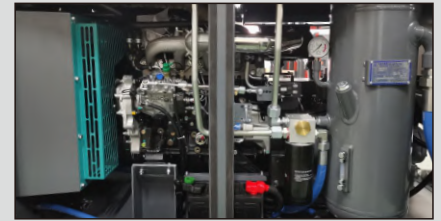
QUICK VIEW

ENGINE DRIVE COMPRESSOR

50-1600 CFM
@ 7-30 Bar



- 1- TWO STAGE FILTERS 4- DIESEL ENGINE 7- SOUNDPROOF COTTON
- 2- LIFTING POINT 5- FUEL TANK 8- DRAIN AREA
- 3- EXHAUST PIPE 6- SAFETY PROTECTION 9- FORKLIFT RAILS



EASY MAINTENANCE DESIGN



TWO STAGE FILTERS



AIR OUTLETS



MECHANICAL PROTECTION



OUTSIDE EMERGENCY STOP



- 1- LOCKABLE DOOR 5- STABILIZER LEG 9- EXHAUST AREA
- 2- CONTROL PANEL 6- TWO STAGE FILTERS 10- PROTECTION
- 3- AIR OUTLETS 7- FUEL TANK 11- JOCKEY WHEEL
- 4- TAIL LIGHTS 8- TRUCK TYRES 12- DRAWBAR

7 Bar Series

CFAIR
ENGINE DRIVE COMPRESSOR



ENGINE DRIVE COMPRESSOR
50-830 CFM
@7 Bar 102PSI

SEPECIFICATION		CF50M-7	CF120B/M-7	CF185B/M-7	CF190B/M-7	CF275B/M-7	CF400B/M-7	CF550B/M-7	CFDP830B/M-7
Air End Type		Rotary Twin Screw, Single stage, Oil cooled							
Pressure Type		Single stage	Single stage	Single stage	Single stage	Single stage	Single stage	Single stage	Two-stage
Free Air Delivery	CFM	50	120	185	190	275	400	550	830
	mm3/min	1.4	3.4	5.2	5.4	7.8	11.3	15.6	23.5
	l/s	23.6	56.6	87.3	89.7	129.8	188.8	259.6	391.8
Working Pressure	bar	7	7	7	7	7	7	7	7
	psi	101.5	101.5	101.5	101.5	101.5	101.5	101.5	101.5
Air Receiver Tank Capacity	L	14	32	32	32	40	85	85	185
Compressor Oil Capacity	L	4	15	15	15	25	50	50	95
Air Outlets		3/4" x 1	3/4" x 1	3/4" x 3	3/4" x 3	3/4" x 2 2" x 1	3/4" x 3 2" x 1	3/4" x 3 2" x 1	3/4" x 1 2" x 2
Idle Speed	rpm	2000	1500	1500	1500	1300	1500	1250	1300
Max Speed	rpm	3600	3000	2500	2500	2600	2150	2100	2000
ENGINE SPECIFICATION									
Engine Model		BRIGGS & STRATTON 3864	YANMAR 4TNV88(B)	ISUZU JX493G3	ISUZU JX493G3	ISUZU JX493ZG3	CUMMINS 4BTA3.9-C125	CUMMINS 6BTA5.9-C180	CUMMINS 6CTA8.3-C260
Fuel		Gasoline	Diesel	Diesel	Diesel	Diesel	Diesel	Diesel	Diesel
Emission		/	China Stage II	China Stage II	China Stage II	China Stage III	China Stage II	China Stage II	China Stage II
Engine Type		2 cylinder, Direct-injection	4 cylinder, Direct-injection	4 cylinder, Direct-injection	4 cylinder, Direct-injection	4 cylinder, Direct-injection, Turbo-charged, intercooled	4 cylinder, Direct-injection, Turbo-charged	6 cylinder, Direct-injection, Turbo-charged	6 cylinder, Direct-injection, Turbo-charged
Displacement	L	0.627	2.19	2.54	2.771	2.771	3.9	5.9	8.3
Cooling		Air cooled	Liquid cooled	Liquid cooled	Liquid cooled	Liquid cooled	Liquid cooled	Liquid cooled	Liquid cooled
Rate Output	KW	15.5	35	36	36	58	92	132	194
Fuel tank capacity	L	20	80	80	80	100	165	210	400
Engine oil capacity	L	1.7	7.4	5	5	5	9	16.3	18
Coolant capacity	L	/	8	8	8	8	30	35	55
Battery Type / Electrical System	V	Maintenance-free , DC12V	Maintenance-free , DC12V	Maintenance-free , DC12V	Maintenance-free , DC12V	Maintenance-free , DC12V	Maintenance-free , DC24V	Maintenance-free , DC24V	Maintenance-free , DC24V
Battery Rating	Ah	310CCA, 36AH	580CCA, 60AH	580CCA, 60AH	580CCA, 60AH	600CCA, 80AH	580CCA, 2*60AH	600CCA, 2*80AH	850CCA, 2*120AH
FUEL CONSUMPTION									
Average	L/H	2.2	6.1	6.3	6.3	10.2	16.4	23.3	35
No-load	L/H	1.1	2.8	3.1	3.1	5.3	10.8	13.1	21.2
DIMENSION & WEIGHT (BOX TYPE)									
L X W X H	mm	/	2100x980x1100	2100x980x1100	2100x980x1100	2280x1230x1370	2660x1355x1470	2900x1355x1470	4000x2075x1890
Dry Weight	kg	/	950	1000	1000	1300	1950	1950	3650
Load Container	20ft	/	10	10	10	4	2	2	1
	40HQ	/	22	22	22	9	4	4	2
OPERATION									
Work Temperature	°C	-10 - 50	-10 - 50	-10 - 50	-10 - 50	-10 - 50	-10 - 50	-10 - 50	-10 - 50
Work Temperature with cold start	°C	-20 - 50	-20 - 50	-20 - 50	-20 - 50	-20 - 50	-20 - 50	-20 - 50	-20 - 50
Sound Level	dBA	69	68	68	68	70	71	72	74
TRAILER (OPTIONAL)									
Towing Hitch	mm	70mm Ring type	70mm Ring type	70mm Ring type	70mm Ring type	70mm Ring type	70mm Ring type	70mm Ring type	70mm Ring type
Axle Type		Single Axle	Single Axle	Single Axle	Single Axle	Single Axle	Single Axle	Single Axle	Dual Axle
Brake System		/	/	/	/	No brake as standard, electric brake as option	/	/	/
Packing System		Manual	Manual	Manual	Manual	Manual	Manual	Manual	Manual
Tyre Size		8inch	2*165R13	2*185R14	2*185R14	2*215/75R15 LT	2*235/75R16	2*235/75R16	4*235/75R16
DIMENSION & WEIGHT (PORTABLE TYPE)									
L X W X H	mm	890x635x670	3375x1610x1675	3375x1610x1675	3375x1610x1675	3530x1760x1850	3910x1885x1950	4500x2025x2065	5798x2075x2495
Dry Weight	kg	155	1100	1120	1120	1450	2100	2100	4250
Load Container	20ft	54	4	4	4	4	2	2	1
	40HQ	117	16	16	16	9	4	4	2



10.5 Bar Series

ENGINE DRIVE COMPRESSOR
100-950 CFM
@10.5 Bar 152PSI

SEPECIFICATION		CF100B/M-10.5	CF210B/M-10.5	CF390B/M-10.5	CF535B/M-10.5	CF750B/M-12	CFDP950B/M-10.5
Air End Type		Rotary Twin Screw, Single stage, Oil cool					
Pressure Type		Single stage	Single stage	Single stage	Single stage	Two-stage	Two-stage
Free Air Delivery	CFM	100	210	390	535	750	950
	mm ³ /min	2.8	5.9	11.0	15.1	21.2	26.9
	l/s	47.2	99.1	184.1	252.5	354.0	448.4
Working Pressure	bar	10.5	10.5	10.5	10.5	12	10.5
	psi	152.3	152.3	152.3	152.3	174.0	152.3
Air Receiver Tank Capacity	L	32	40	85	85	155	185
Compressor Oil Capacity	L	15	25	50	50	75	95
Air Outlets		3/4" x 1	3/4" x 2	3/4" x 3 2" x 1	3/4" x 3 2" x 1	3/4" x 3 2" x 1	3/4" x 1 2" x 2
Idle Speed	rpm	1300	1300	1250	1250	1300	1250
Max Speed	rpm	2600	2600	2100	2100	1750	1900
ENGINE SPECIFICATION							
Engine Model		ISUZU JX493G3	ISUZU JX493ZG3	CUMMINS 6BT5.9-C150	CUMMINS 6BTA5.9-C180	CUMMINS 6CTA8.3-C260	CUMMINS 6LTA8.9-C360
Fuel		Diesel	Diesel	Diesel	Diesel	Diesel	Diesel
Emission		China Stage II	China Stage II	China Stage II	China Stage II	China Stage II	China Stage II
Engine Type		4 cylinder, Direct-injection	4 cylinder, Direct-injection, Turbo-charged, intercooled	6 cylinder, Direct-injection, Turbo-charged	6 cylinder, Direct-injection, Turbo-charged	6 cylinder, Direct-injection, Turbo-charged	6 cylinder, Direct-injection, Turbo-charged
Displacement	L	2.771	2.771	5.9	5.9	8.3	8.9
Cooling		Liquid cooled	Liquid cooled	Liquid cooled	Liquid cooled	Liquid cooled	Liquid cooled
Rate Output	KW	36	58	109	133	194	208
Fuel tank capacity	L	80	100	210	210	300	500
Engine oil capacity	L	5	5	16.3	16.3	18	27.6
Coolant capacity	L	8	8	30	35	55	65
Battery Type / Electrical System	V	Maintenance-free , DC12V	Maintenance-free , DC12V	Maintenance-free , DC24V	Maintenance-free , DC24V	Maintenance-free , DC24V	Maintenance-free , DC24V
Battery Rating	Ah	580CCA, 60AH	600CCA, 80AH	580CCA, 2*60AH	600CCA, 2*80AH	850CCA, 2*120AH	950CCA, 2*150AH
FUEL CONSUMPTION							
Average	L/H	6.3	10.2	19.2	23.4	34.1	36.7
No-load	L/H	3.1	5.3	10.7	13.1	23.8	22.6
DIMENSION & WEIGHT (BOX TYPE)							
L X W X H	mm	2100x980x1100	2280x1230x1370	2660x1355x1470	2900x1355x1470	3800x1850x1890	4000x2075x1890
Dry Weight	kg	1000	1300	1950	2250	2950	5150
Load Container	20ft	10	4	2	2	1	1
	40HQ	22	9	4	4	2	2
OPERATION							
Work Temperature	°C	-10 - 50	-10 - 50	-10 - 50	-10 - 50	-10 - 50	-10 - 50
Work Temperature with cold start	°C	-20 - 50	-20 - 50	-20 - 50	-20 - 50	-20 - 50	-20 - 50
Sound Level	dBA	68	68	70	73	73	80
TRAILER (OPTIONAL)							
Towing Hitch	mm	70mm Ring type	70mm Ring type	70mm Ring type	70mm Ring type	70mm Ring type	70mm Ring type
Axle Type		Single Axle	Single Axle	Single Axle	Single Axle	Dual Axle	Dual Axle
Brake System		No brake as standard, electric brake as option					
Packing System		Manual	Manual	Manual	Manual	Manual	Manual
Type Size		2*165R13	2*185R14	2*215/75R15 LT	2*215/75R15 LT	4*215/75R15 LT	4*235/75R16
DIMENSION & WEIGHT (PORTABLE TYPE)							
L X W X H	mm	3375x1610x1675	3530x1760x1850	3910x1885x1950	4150x1885x1950	4300x1850x2100	5798x2075x2495
Dry Weight	kg	1120	1450	2100	2650	3380	5650
Load Container	20ft	4	4	2	2	1	1
	40HQ	16	9	4	4	2	2

DIESEL ENGINE

HIGH PRESSURE



SEPECIFICATION		CF140B/M-15	CF390B/M-15	CFDP550B/M-19	CFDP750B/M-21	CFDP1070B/M-25	CFDP1150B/M-30	CFDP1600B/M-17
Air End Type		Rotary Twin Screw, Single stage, Oil cool						
Pressure Type		Single stage	Single stage	Two-stage	Two-stage	Two-stage	Two-stage	Two-stage
Free Air Delivery	CFM	140	390	550	750	1070	1150	1600
	mm ³ /min	4.0	11.0	15.6	21.2	30.3	32.6	45.3
	l/s	66.1	184.1	259.6	354.0	505.0	542.8	755.2
Working Pressure	bar	16.5	16.5	20.5	22.5	26.5	31.5	18.5
	psi	239.3	239.3	297.3	326.3	384.3	456.8	268.3
Air Receiver Tank Capacity	L	32	85	85	85	180	180	180
Compressor Oil Capacity	L	15	50	50	50	100	100	100
Air Outlets		3/4" x 2	3/4" x 3 2" x 1	3/4" x 3 2" x 1	3/4" x 3 2" x 1	3/4" x 1 2" x 2	3/4" x 1 2" x 2	3/4" x 1 2" x 2
Idle Speed	rpm	1300	1250	1300	1200	1200	1200	1200
Max Speed	rpm	3000	2100	2000	2000	1900	1900	1900
ENGINE SPECIFICATION								
Engine Model		ISUZU JX493ZG3	CUMMINS 6BTA5.9-C180	CUMMINS 6CTA8.3-C260	CUMMINS 6LTA8.9-C360	CUMMINS QSZ13-C550	CUMMINS QSZ13-C550	CUMMINS QSZ13-C550
Fuel		Diesel	Diesel	Diesel	Diesel	Diesel	Diesel	Diesel
Emission		China Stage II	China Stage II	China Stage II	China Stage II	EU stage II	EU stage II	EU stage II
Engine Type		4 cylinder, Direct-injection, Turbo-charged, intercooled	6 cylinder, Direct-injection, Turbo-charged	6 cylinder, Direct-injection, Turbo-charged	6 cylinder, Direct-injection, Turbo-charged	6 cylinder, Direct-injection, Turbo-charged	6 cylinder, Direct-injection, Turbo-charged	6 cylinder, Direct-injection, Turbo-charged
Displacement	L	2.771	5.9	8.3	8.9	13	13	13
Cooling		Liquid cooled	Liquid cooled	Liquid cooled	Liquid cooled	Liquid cooled	Liquid cooled	Liquid cooled
Rate Output	KW	58	133	196	213	410	410	410
Fuel tank capacity	L	100	210	300	500	700	700	700
Engine oil capacity	L	5	16.3	18	27.6	46	46	46
Coolant capacity	L	8	35	55	65	160	160	160
Battery Type / Electrical System	V	Maintenance-free, DC12V	Maintenance-free, DC24V	Maintenance-free, DC24V	Maintenance-free, DC24V	Maintenance-free, DC24V	Maintenance-free, DC24V	Maintenance-free, DC24V
Battery Rating	Ah	600CCA, 80AH	600CCA, 2*80AH	850CCA, 2*120AH	950CCA, 2*150AH	950CCA, 2*150AH	950CCA, 2*150AH	950CCA, 2*150AH
FUEL CONSUMPTION								
Average	L/H	10.5	23.4	34.5	41.4	72.6	72.6	72.6
No-load	L/H	5.3	13.1	25.2	25.2	42.7	42.7	42.7
DIMENSION & WEIGHT (BOX TYPE)								
L X W X H	mm	2280x1230x1370	2900x1355x1470	3800x1850x1890	4000x2075x1890	4500x2200x2000	4500x2200x2000	4500x2200x2000
Dry Weight	kg	1300	2250	2950	5150	5650	5700	5750
Load Container	20ft	4	2	1	1	1	1	1
	40HQ	9	4	2	2	2	2	2
OPERATION								
Work Temperature	°C	-10 - 50	-10 - 50	-10 - 50	-10 - 50	-10 - 50	-10 - 50	-10 - 50
Work Temperature with cold start	°C	-20 - 50	-20 - 50	-20 - 50	-20 - 50	-20 - 50	-20 - 50	-20 - 50
Sound Level	dBA	68	73	73	80	78	78	78
TRAILER (OPTIONAL)								
Towing Hitch	mm	70mm Ring type	70mm Ring type	70mm Ring type	70mm Ring type	70mm Ring type	70mm Ring type	70mm Ring type
Axle Type		Single Axle	Dual Axle	Dual Axle	Dual Axle	Dual Axle	Dual Axle	Dual Axle
Brake System		No brake as standard, electric brake as option						
Packing System		Manual	Manual	Manual	Manual	Manual	Manual	Manual
Tyre Size		2*185R14	4*185R14	4*235/75R16	4*235/75R16	4*235/75R16	4*235/75R16	4*235/75R16
DIMENSION & WEIGHT (PORTABLE TYPE)								
L X W X H	mm	3530x1760x1850	3910x1885x1950	4300x1850x2100	5798x2075x2495	6250x2200x2400	6250x2200x2400	6250x2200x2400
Dry Weight	kg	1450	2100	3380	5650	6150	6100	6250
Load Container	20ft	4	2	1	1	1	1	1
	40HQ	9	4	2	2	2	2	2

DIESEL ENGINE

AFTER COOLER



SEPECIFICATION		CF185B/MC-7	CF190B/MC-7	CF275B/MC-7	CF400B/MC-7	CF100B/MC-10.5	CF210B/MC-10.5	CF390B/MC-10.5
Air End Type		Rotary Twin Screw, Single stage, Oil cooled						
Pressure Type		Single stage	Single stage	Single stage	Single stage	Single stage	Single stage	Single stage
Free Air Delivery	CFM	185	190	275	400	100	210	390
	mm ³ /min	5.2	5.4	7.8	11.3	2.8	5.9	11.0
	l/s	87.3	89.7	129.8	188.8	47.2	99.1	184.1
Working Pressure	bar	7	7	7	7	10.5	10.5	10.5
	psi	101.5	101.5	101.5	101.5	152.3	152.3	152.3
Air Receiver Tank Capacity	L	32	32	40	85	32	40	85
Compressor Oil Capacity	L	15	15	25	50	15	25	50
Air Outlets		3/4" x 3	3/4" x 3	3/4" x 3	3/4" x 3 2" x 1	3/4" x 2	3/4" x 3	3/4" x 3 2" x 1
Discharge Air Temperature	°C	Atmospheric Temperature + 20 °C	Atmospheric Temperature + 20 °C	Atmospheric Temperature + 20 °C	Atmospheric Temperature + 20 °C	Atmospheric Temperature + 20 °C	Atmospheric Temperature + 20 °C	Atmospheric Temperature + 20 °C
Idle Speed	rpm	1500	1350	1350	1500	1350	1350	1250
Max Speed	rpm	3000	2600	2600	2100	2800	2800	2100
ENGINE SPECIFICATION								
Engine Model		YANMAR 4TNV88-(B)	ISUZU JX493G3	ISUZU JX493ZG3	CUMMINS 4BTA3.9-C125	ISUZU JX493G3	ISUZU JX493ZG3	CUMMINS 6BT5.9-C150
Fuel		Diesel	Diesel	Diesel	Diesel	Diesel	Diesel	Diesel
Emission		China Stage II	China Stage II	China Stage II	China Stage II	EU stage II	EU stage II	EU stage II
Engine Type		4 cylinder, Direct-injection	4 cylinder, Direct-injection Turbo-charged,	4 cylinder, Direct-injection, Turbo-charged,intercooled	6 cylinder, Direct-injection, Turbo-charged	6 cylinder, Direct-injection, Turbo-charged	6 cylinder, Direct-injection, Turbo-charged	6 cylinder, Direct-injection, Turbo-charged
Displacement	L	2.19	2.771	2.771	3.9	2.771	2.771	5.9
Cooling		Liquid cooled	Liquid cooled	Liquid cooled	Liquid cooled	Liquid cooled	Liquid cooled	Liquid cooled
Rate Output	KW	35	36	58	92	36	58	110
Fuel tank capacity	L	80	80	100	165	80	100	210
Engine oil capacity	L	7	5	5	9	5	5	16.3
Coolant capacity	L	10	8	8	30	8	8	30
Battery Type / Electrical System		V Maintenance-free, DC12V	V Maintenance-free, DC12V	V Maintenance-free, DC12V	V Maintenance-free, DC24V	V Maintenance-free, DC12V	V Maintenance-free, DC12V	V Maintenance-free, DC24V
Battery Rating	Ah	580CCA, 60AH	580CCA, 60AH	600CCA, 80AH	580CCA, 2*60AH	580CCA, 60AH	600CCA, 80AH	580CCA, 2*60AH
FUEL CONSUMPTION								
Average	L/H	6.1	6.3	10.2	16.4	6.3	10.2	19.2
No-load	L/H	2.8	3.1	5.3	10.8	3.1	5.3	10.7
DIMENSION & WEIGHT (BOX TYPE)								
L X W X H	mm	2100x980x1100	2100x980x1100	2280x1230x1370	2660x1355x1470	2100x980x1100	2280x1230x1370	2660x1355x1470
Dry Weight	kg	980	1000	1330	1980	1030	1330	1980
Load Container	20ft	10	10	4	2	10	4	2
	40HQ	22	22	9	4	22	9	4
OPERATION								
Work Temperature	°C	-10 - 50	-10 - 50	-10 - 50	-10 - 50	-10 - 50	-10 - 50	-10 - 50
Work Temperature with cold start	°C	-20 - 50	-20 - 50	-20 - 50	-20 - 50	-20 - 50	-20 - 50	-20 - 50
Sound Level	dBA	68	68	70	71	68	68	70
TRAILER (OPTIONAL)								
Towing Hitch	mm	70mm Ring type	70mm Ring type	70mm Ring type	70mm Ring type	70mm Ring type	70mm Ring type	70mm Ring type
Axle Type		Single Axle	Single Axle	Single Axle	Single Axle	Single Axle	Single Axle	Single Axle
Brake System		No brake as standard, electric brake as option						
Packing System		Manual	Manual	Manual	Manual	Manual	Manual	Manual
Tyre Size		2*185R14	2*185R14	2*185R14	2*215/75R15 LT	2*185R14	2*185R14	2*215/75R15 LT
DIMENSION & WEIGHT (PORTABLE TYPE)								
L X W X H	mm	3375x1610x1675	3375x1610x1675	3530x1760x1850	3910x1885x1950	3375x1610x1675	3530x1760x1850	3910x1885x1950
Dry Weight	kg	1100	1120	1480	2130	1150	1480	2130
Load Container	20ft	4	4	4	2	4	4	2
	40HQ	16	16	9	4	16	9	4

PRODUCTS VIEW

CFAIR

ENGINE DRIVE COMPRESSOR

CFAIR TECHNIQUE SOLUTIONS

Technique Business Area has a forward-thinking philosophy. For us, creating customer value is all about anticipating and exceeding your future needs – while never compromising our environmental principles. Looking ahead and staying ahead is the only way we can ensure we are your long term partner

7 BAR PORTABLE



10-12 BAR PORTABLE



HIGH PRESSURE SERIES



BOX TYPE



10-12 Bar Box



AFTER COOLER



PNEUMATIC TOOLS



AIR TOOLS Series



SPARE PARTS

