

## HAZARDOUS AREA PRODUCTS

We supply Hazardous Area Products suitable for installation into locations and areas designated as a potentially explosive atmosphere, identified as Zone 1/2 (gas) or Zone 21/22 (dust) according to the ATEX directive.

Gases, vapours, mists and dusts all form potentially explosive atmospheres with air and are classed as hazardous area locations according to the degree of explosion risk, known as Zones. Hazardous area workplaces and locations are classified in terms of Zones on the basis of the frequency and duration of the occurrence of an explosive atmosphere.

International classifications, such as ATEX and IECEx, protect your people, plant and productivity from catastrophic industrial accidents and fatalities.

Safe Zone



### GASES, VAPOURS, MISTS

Hazardous area zone classifications:

**Zone 0** A place in which an explosive atmosphere consisting of a mixture with air of dangerous substances present continuously or for long periods or frequently.

**Zone 1** A place in which an explosive atmosphere consisting of a mixture with air of dangerous substances is likely to occur in normal operation occasionally.

**Zone 2** A place in which an explosive atmosphere consisting of a mixture with air of dangerous substances is not likely to occur in normal operation but, if it does occur, will persist for a short period only.

Zone 2/22

Zone 1/21

Zone 0/20

### DUSTS

Hazardous area zone classifications:

**Zone 20** A place in which an explosive atmosphere in the form of a cloud of combustible dust in air is present continuously, or for long periods or frequently.

**Zone 21** A place in which an explosive atmosphere in the form of a cloud of combustible dust in air is likely to occur in normal operation occasionally.

**Zone 22** A place in which an explosive atmosphere in the form of a cloud of combustible dust in air is not likely to occur in normal operation but, if it does occur, will persist for a short period only.

We supply Hazardous Area Lighting, Power & Electrical Products for safe installation in Zone 1 & 2 locations with potentially explosive atmospheres and gas risks including:

- Solvent Vapours – liquid paint, varnish, bonding, stripping
- Propellant Gas – lubricants, perfumes, paint, surface treatment
- Gas Leaks – heating processes, hydrogen furnaces
- Handling & Storage – butane, propane
- Fossil Fuels – oil, petrol, methane





**Ex**

RELIABLE AND COMPREHENSIVE



- CONTROL PANELS
- PLUGS
- ISOLATORS
- LIGHTING ENCLOSURES & JUNCTION BOXES
- CONTROL STATIONS
- MOTOR STARTERS
- HEAT TRACE
- GAS DETECTION
- FLAME DETECTION
- PROCESS INSTRUMENTATION PROCESS HEATING
- VENTILATION FAN
- SECURITY ACCESS CONTROL

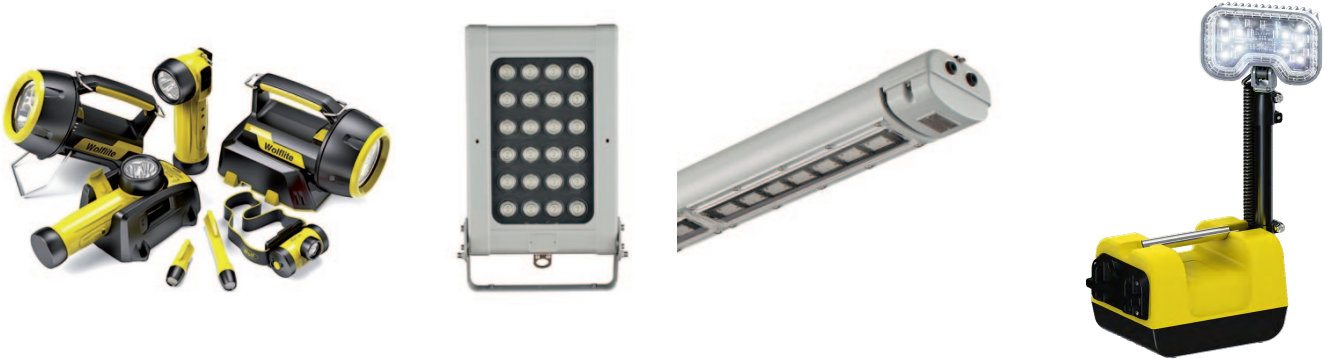


SCAN ME

## LIGHTING

### Portable, Temporary & Fixed Light Fittings

Hazardous area lighting and luminaires including linear, wellglass, floodlight and bulkhead lights certified by ATEX & IECEx for Zone 0, Zone 1/21 & Zone 2/22 lighting in potentially explosive gas and dust atmospheres.



## ENCLOSURES & JUNCTION BOXES

### LV, MV, HV up to 45kV

Enclosures for instrumentation, power or control applications – stainless steel, mild steel, glass reinforced polyester, aluminium and polycarbonate. Certified according to ATEX and IECEx.



## CONTROL STATIONS & PUSHBUTTONS

### Stainless Steel, Aluminium & GRP

Hazardous area control stations, surface or panel mounted, for potentially explosive atmospheres and suitable for Zones 1 & 2 gas and Zone 21 & 22 dust environments – various push buttons, emergency stops, switches, mushroom heads and indicator lamps integrated into control station.

Explosion proof and Intrinsically Safe equipment is available to support power distribution and machinery in industrial and hazardous areas.



## HAZARDOUS AREA CONTROL PANELS

### Ex d (Flameproof)

Custom made control panels and distribution boards designed and manufactured to client specification for use in hazardous areas. International certification options including ATEX, IECEx, EACEx & TRCU. Robust Ex-d flameproof enclosures.



## PLUGS, SOCKETS & ISOLATORS

### Safe Disconnect Under Load

LV power supply and distribution products include industrial, high current and high temperature plugs, sockets and deconnectors with integrated switches for Zone 1/21 and Zone 2/22 hazardous areas – explosion proof connectors are available for copper, coax and fibre optic contacts with ATEX and IECEx certification.



## SIGNALLING

### Sounders, Beacons & Call Points

Explosion proof audible and visual signalling devices for fire and gas detection in industrial onshore, marine and offshore hazardous locations.



## PROCESS & SPACE HEATING

### Immersion, Air, Line & Water Heaters

Hazardous area electrical heating provides frost protection and process temperature maintenance of liquids and gases in potentially explosive atmospheres, including Zone 1 and Zone 2.



**NEW EXHEAT**  
"The Bulldog" -  
the world's first  
truly portable  
hazardous area  
fan assisted  
heater for  
hazardous area  
location  
heating.



## ELECTRICAL HEATING

### Drum, IBC, Tank & Hose - Customised & Bespoke Solutions

Highest performance heating for temperature control and frost protection of bulk containers (IBC's), storage drums, pumps, pipes, tanks and gas bottle cylinders.



## HEAT TRACING CABLE & SYSTEMS

### Self Regulating, Mineral Insulated, Constant Wattage & Instrument Tubing Bundles

Trace heating cables provide frost protection and process temperature maintenance to pipes, vessels, tanks, hoppers, valves and drums - process heating of aggressive organic and inorganic chemicals up to 550°C.



## HEAT, FLAME & FIRE DETECTION

### Cables, Sensors & Detectors

Advance warning of overheating and early stage detection of heat, flame and smoke to prevent fire  
- analogue, digital and fibre optic fire and heat detection cables are available.



## GAS DETECTORS

### Portable & Fixed

Single and multi-gas detectors for toxic and flammable gases in industrial and hazardous areas including hydrogen sulphide, methane, carbon monoxide and offshore hydrocarbon gases.



SCAN ME

## ATEX FAN HEATERS

### Portable & Temporary Heating Solutions

EXHEAT Industrial's MFH 'The Bulldog' Portable Fan Heater is the world's first truly portable hazardous area fan assisted heater.

The Bulldog combines efficient design with simple functionality to provide a Portable Heating Solution for use in Hazardous Environments where the atmosphere is classified as Zone 1/21 and Zone 2/22 (IIA, IIB and H2).

**Certified for use  
in Zone 1/21 &  
Zone 2/22  
Hazardous  
Areas.**

**FEATURES:**

- Compact & Lightweight
- Up To 6kW Heat Output
- Voltages 110V - 690V (50/60Hz)
- IP65

**CERTIFICATION:**

**ATEX**

Ex II 2 GD Ex h

Ex db eb IIB + H2 T3 to T4 Gb

Ex tb IIIC T200°C to T135°C Db

**IECEX**

Ex db eb IIB + H2 T3 to T4 Gb

Ex tb IIIC T200°C to T135°C Db

CU-TR (EAC) and CSA US (Pending)



## ATEX FAN HEATERS

### Fixed & Portable Heating Solutions

EXHEAT's LFH Fixed Fan Heater combines superior efficiency with simple functionality to provide a next-generation heating solution for use in onshore and offshore hazardous environments where the potentially explosive atmosphere is classified as Zone 1/2 (IIB+H2) – T3 and T4 temperature classes. The heater framework permits mounting options on floors, walls and ceilings.

#### FEATURES:

- Robust & Non-corrosive Stainless Steel
- Up to 40kW Heat Output & 46 Degrees Celsius Temperature Rise
- Plug & Play or Hard-Wire
- 230V – 690V 50 / 60Hz
- Portable & Can be Ducted (Front or Rear)
- Ambient Temperature Range -40 to +40 Degrees Celsius

#### CERTIFICATION:

##### ATEX

Ex II 2 G D Ex h  
Ex db eb IIB+H2 T3...T4 Gb  
Ex tb IIIC T200°C...T135°C Db

##### IECEX

Ex db eb h IIB+H2 T3...T4 Gb  
Ex tb IIIC T200°C...T135°C Db

##### CU TR (EAC)

1Ex db e IIB+H2 T4...T3 Gb X  
Ex tb IIIC T135°C...T200°C Db X



SCAN ME

## ATEX & IECEX FANS

### Ventilation Fans

The Exstream is the worlds first portable ventilation fan to be ATEX & IECEX certified to both electrical and non-electrical standards. The fan offers a global safety solution for hazardous area ventilation.

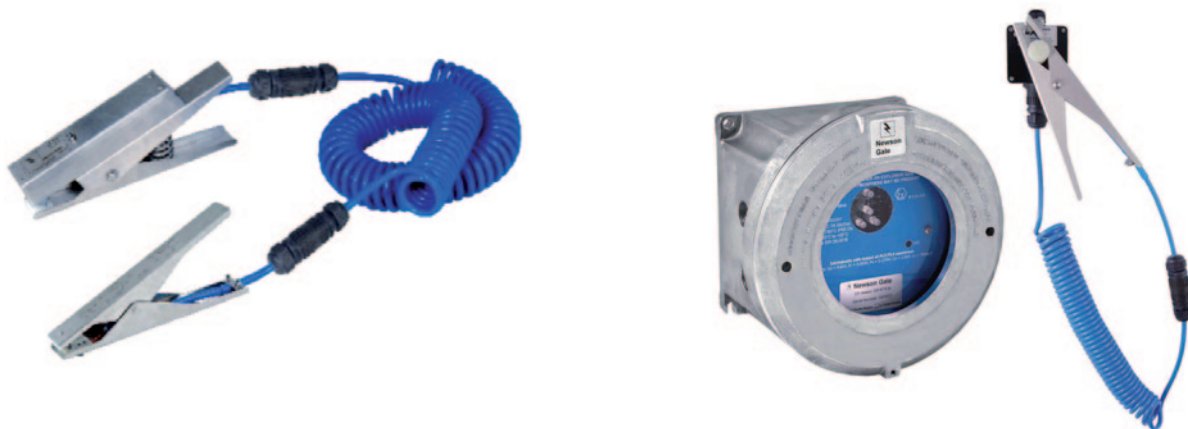


#### FEATURES:

- Class Leading Airflow: Up to 7750m<sup>3</sup>/hr
- Robust: Mild Steel or Stainless Steel Casing
- Low Power Consumption: <8A FLC
- Low Noise Output: 49db
- Easy to Use: Plug & Play Fan
- Voltage Options: 110V/230V & 3-Phase Options Available

## STATIC GROUNDING EQUIPMENT

Electrostatic discharge can cause fire and explosions in explosive atmosphere. Understanding of the application and correct product specification servers to protect employees. For the safest static grounding solutions, speak to our specially trained team to discuss your requirements and ensure compliance.



## SECURITY & ACCESS CONTROL

### Electronic Access Control & Door Locking

The Maglock is the worlds only ATEX & IECEX certified magnetic door lock. The device works with both the SecurEx door controller and access products as well as other third party ACU systems providing a highly effective security solution with the ability to withstand loads of up to 500 kgf.



### CCTV Camera Stations & PIR Motion Detector

Harsh industrial and ATEX/IECEX certified CCTV equipment for use in explosive atmospheres. Also launched in is a new ATEX certified PIR detector which can be used as part of intruder alarms, access controls or for lighting control.



## COSHH & HAZARDOUS SUBSTANCE STORAGE CABINETS

Range of indoor & outdoor storage cabinets for hazardous and flammable substances. Provides safe storage of oils, paints, inks and chemicals. Temperature controlled and ATEX options available to comply with Zone 1/21 & Zone 2/22 explosive atmospheres.



## EMERGENCY SAFETY SHOWERS

Range of emergency safety showers, eyebaths and decontamination units for use in industrial and hazardous areas. Compliant with the US ANSI standards and the latest EC directives in Europe, including ATEX Directive.



SCAN ME

## PROCESS INSTRUMENTATION

### Flow, Temperature, Pressure & Level Measurement

Sensors, transmitters, probes, instruments and meters for reliable and accurate process measurement in potentially explosive atmospheres.



## SOLENOID VALVES

### SIL3 NACE ATEX NAMUR Valves

General service and hazardous area location 2-way, 3-way and 4-way solenoid valves to handle flow control of liquid, gas, steam and oil in both onshore and offshore installations.



## COMMUNICATIONS

### Smartphones, Tablets & Computers

Mobile computing and communication technologies for use in Zone 1/21, 2/22 explosive atmospheres.



## LV-HV CABLE ACCESSORIES

### Joints, Terminations, Glands & Cleats

LV-HV cable accessories to support the installation of power cable circuits in hazardous area locations supplier for Cold Shrink and Scotchcast joints and terminations up to 33kV.



# WORLD'S FIRST ATEX HIGH SPEED DOOR



WIND-LOAD  
RESISTANT



SUPERIOR  
SEALING



ULTRA  
SAFE



ENERGY  
SAVING




3RD PARTY  
CERTIFIED



CRASH  
FORGIVING



Manufactured by Dynaco 



SCAN ME

